

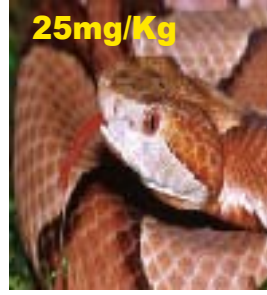
LD 50 TOXICITY LEVELS

GROUP ONE ORDER SERPENTES FAMILY CROTALIDAE



22 mg/Kg

**BOTHROPS
LANCEOLATUS**

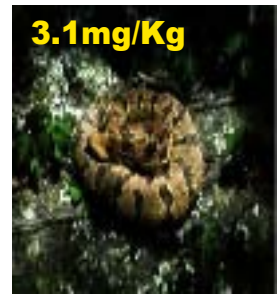


25mg/Kg

**CENCHRIS
CONTORTIX**



**CROTALUS
CASCAVELLA**



3.1mg/Kg

**CROTALUS
HORRIDUS**



36.9mg/Kg

**LACHESIS
MUTA**



25.8mg/Kg

**TOXICOPHIS
PUGNAX**

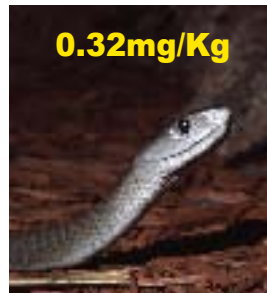
The Mouse LD50 is a figure that is indicative of a dosage that will kill 50% of the mice envenomated within 24 hours. These are standard 20 g mice. Thus a simple calculation involving yield and LD50 SHOULD be indicative of how many mice such a snake is capable of killing and by very crude approximation the weight of a human it would kill. eg (Black Mamba) has a LD50 (subcutaneous) of 0.32 mg/kg and a yield of 50.0 - 120.0 mg of venom. This means that it takes 0.32mg of venom to kill 500 grammes, of mice (remember it only kills half of those it is administered to). (OFF INTERNET)

GROUP TWO ORDER SERPENTES FAMILY ELAPIDAE



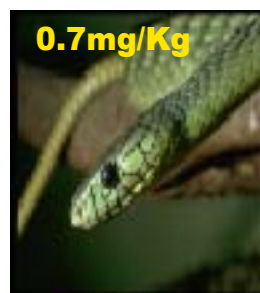
3.6mg/Kg

**BUNGARUS
FASICATUS**



0.32mg/Kg

**DENDROASPIS
POLYEPSIS**

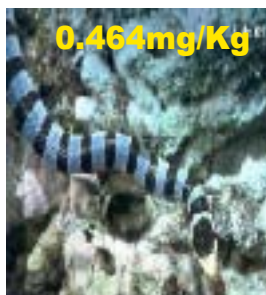


0.7mg/Kg

**DENDROASPIS
VIRIDIS**



**ELAPS
CORALLINUS**



0.464mg/Kg

HYDROPHIS CYANOCINCTUS



0.45mg/Kg

NAJA NAJA



0.025mg/Kg

OXYURANUS MICROLEPIDOTUS

GROUP THREE ORDER SERPENTES FAMILY VIPERIDAE



BITIS ARIETANS



12.5mg/Kg

BITIS NASICORNIS



VIPERA ASPIS



6.45mg/Kg

VIPERA BERUS

GROUP FOUR PYTHONS, LIZARDS ETC



FAMILY BOIDAE
PYTHON REGIUS



FAMILY BOIDAE
BOAE CONSTRICTOR



AMPHISBAENIA
VERMICULARIS



FAMILY LACERTIDAE
LACERTA AGILIS

GROUP FIVE ORDER CHELONIA



FAMILY HELODERMATIDAE
HELODERMA SUSPECTUM



CHAMELEON



TESTUDA GRAECA



TERRAPENE CAROLINA

GROUP SIX PREHISTORIC EXAMPLES



ALLIGATOR MISSISSIPPIENSIS



TYRANNOSAURUS REX



MAIASAURA LAPIDAE

GROUP SEVEN AMPHIBIANS



BUFO BUFO



DENDROBATES AURATUS
Dendrobates tinctoria



SALAMANDRA MACULATA