

## GROUP ONE

Family Mygalidae



**TARANTULA  
CUBENSIS**

Family Mygalidae



**MYGALE  
LASIODORA**

Family Mygalidae



**ATRAX  
ROBUSTUS**

Family Lycosidae



**TARANTULA  
HISPANICA**

## GROUP TWO

Family Theridiidae



**THERIDION**

Family Theridiidae



**LACTRODECTANS  
MACTANS**

Family Theridiidae



**LACTRODECTANS  
HASSELTII**

Family Theridiidae



**LACTRODECTANS  
KATIPO**

Family Loxoscelidae



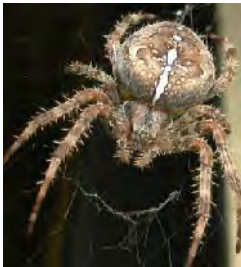
**LOXOSCELES  
RECLUSA**



**TELA  
ARANEARUM**

## GROUP THREE

Family Araneidae



**ARANEA DIADEMA**

Family Araneidae



**ARANEA IXOBOLA  
ARANEA SCINENCIA  
(no picture)**

Family Salticidae



**PORTIA FIMBRIATA**

Family Salticidae



**PORTIA AFRICANA**

Family Agelenidae



**TEGENARIA DOMESTICA**

## GROUP FOUR

Family Chactidae



**ANDROCTONUS  
AMOREUXII  
HEBRAEUS**

Family Chactidae



**BUTHUS  
AUSTRALIS**

Family Trombidiidae



**TROMBIDION  
MUSCAE  
DOMESTICA**

Family Trombidiidae



**IXODES  
RICINUS**

Family Trombidiidae



**PEDICULUS  
CAPITIS**